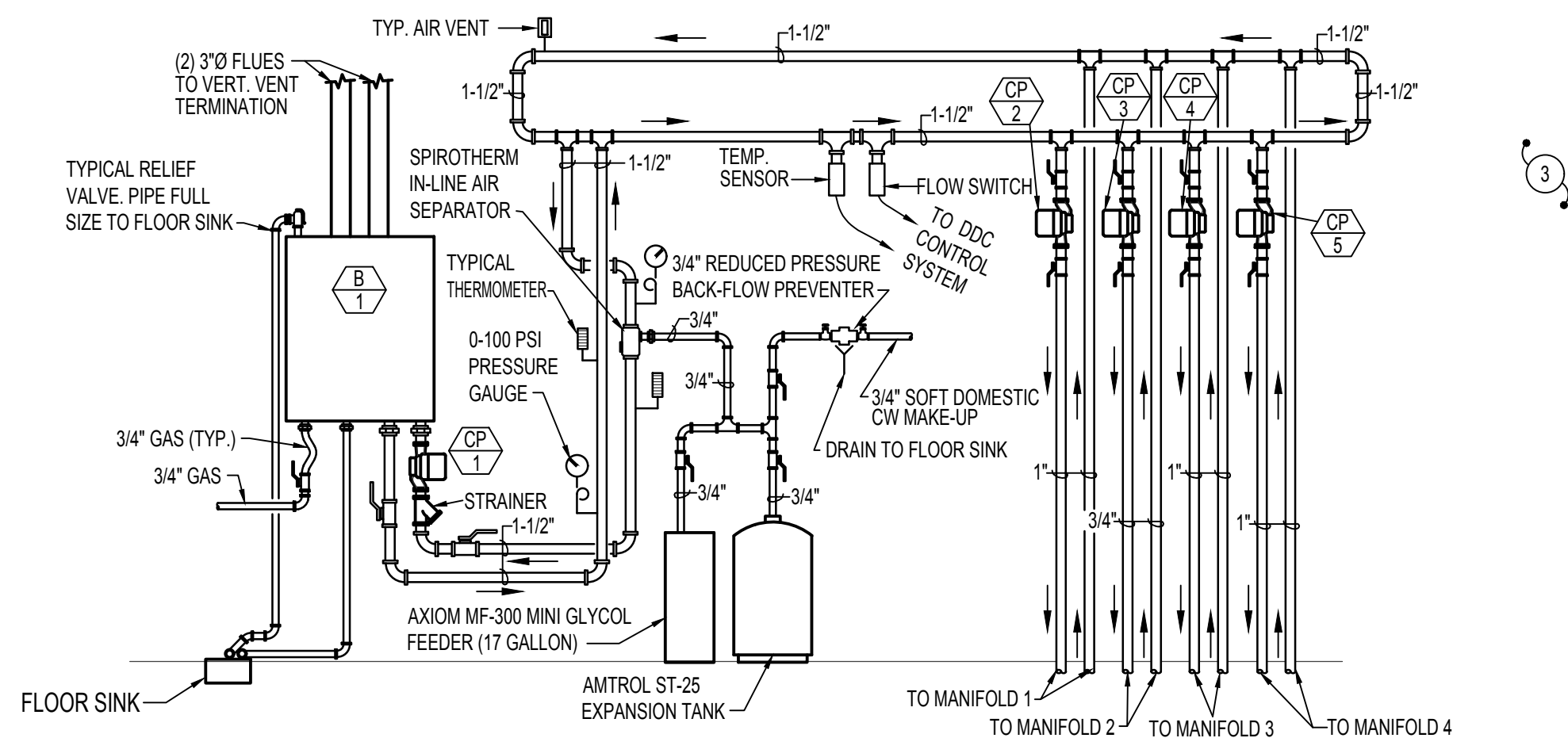
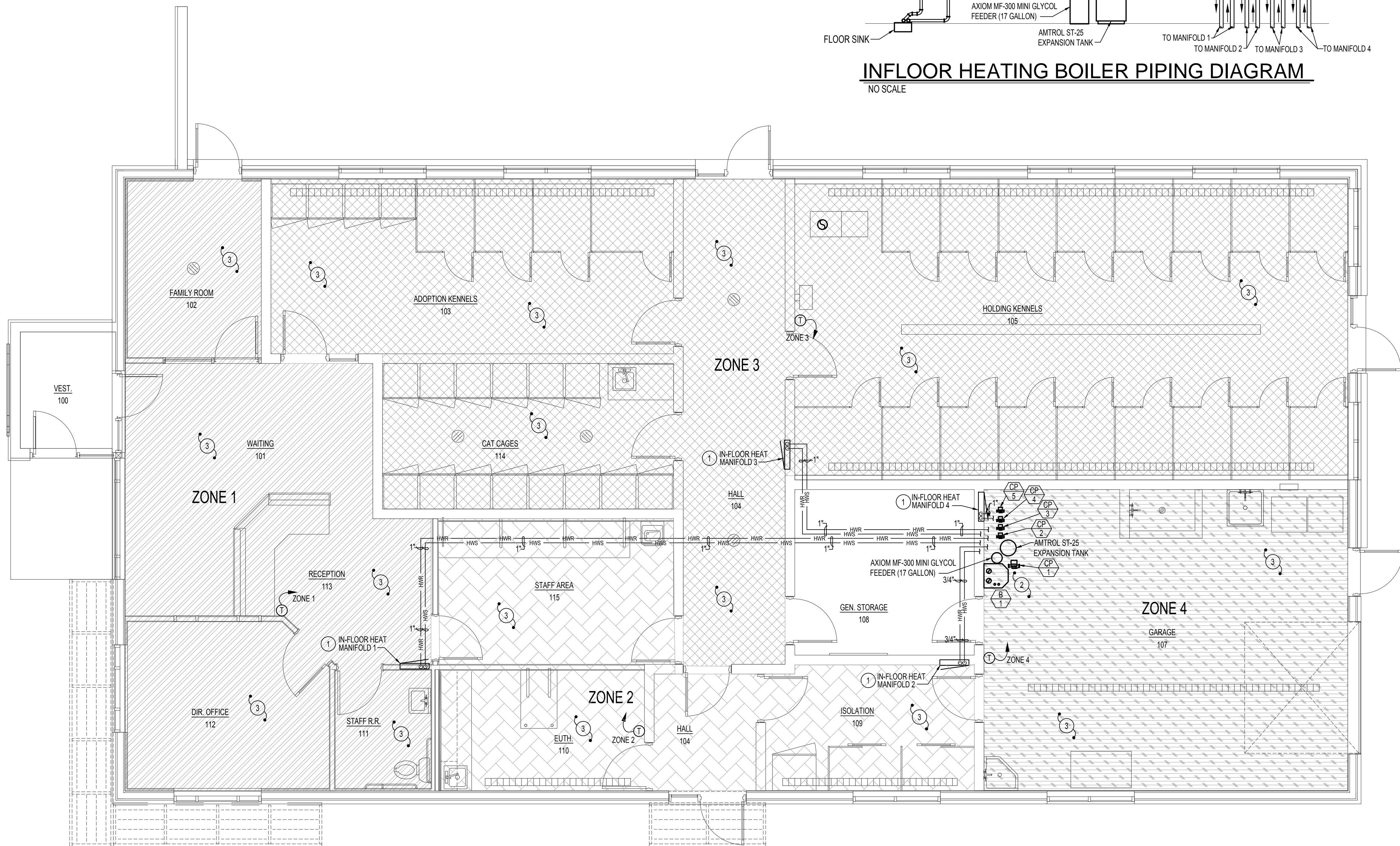


PLAN NOTES:

- 1 IN-FLOOR HEATING MANIFOLDS TO BE INSTALLED IN RECESSED MANIFOLD BOXES IN BLOCK / STUD WALLS IN LOCATIONS SHOWN. HEIGHT OF BOTTOM OF BOX TO BE 12" A.F.F. COORDINATE WITH GENERAL CONTRACTOR AS REQUIRED.
- 2 REFER TO BOILER PIPING DIAGRAM ON THIS SHEET FOR PIPING LOCATED IN THIS AREA.
- 3 SEE TYPICAL IN-FLOOR RADIANT PIPING DETAIL ON SHEET M200.



INFLOOR HEATING BOILER PIPING DIAGRAM
NO SCALE

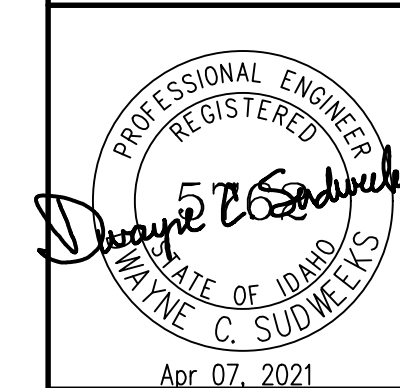


IN-FLOOR HEATING MECH. FLOOR PLAN

SCALE: 1/4" = 1'-0"



MECHANICAL LEGEND	
SYMBOL	DESCRIPTION
(T)	ELECTRONIC THERMOSTAT
(FC 1)	EQUIPMENT SYMBOL
HWS	HOT WATER SUPPLY (HYDRONIC)
HWR	HOT WATER RETURN (HYDRONIC)
HD	HAND DAMPER
(Symbol)	ROUND BRANCH DUCT WITH HAND DAMPER
(Symbol)	RECTANGULAR SUPPLY AND RETURN AIR DUCT TAKE-OFF
(Symbol)	TURNING VANES
(Symbol)	DUCT TRANSITION
(Symbol)	SPIRAL WOUND DUCTWORK
(Symbol)	RETURN AIR OR EXHAUST GRILLE
(Symbol)	CEILING DIFFUSER
(Symbol)	CEILING MOUNTED EXHAUST FAN



Engineered Systems Associates
1355 EAST CENTER
POCATELLO, IDAHO 83201
PHONE: (208) 233-0501
FAX: (208) 233-0529
EMAIL: eso@engsystems.com
ESA JOB NUMBER: 18081

DRAWN BY: SR
CHECKED BY: DCS
JOB NUMBER: --
PROJECT DATE: APRIL 2021
SHEET OF: M100

ANIMAL SHELTER
CHUBBUCK, IDAHO

Myers Anderson
Architecture
Interior Design
Landscape Architecture
101 North Main Street • Pocatello, Idaho 83204 • Tel. (208) 232-3741 • Fax (208) 232-3782
849 Front Street, Suite 202 • Evanston, Wyoming 82930 • Tel. (307) 789-0934
AIA NCARB ASLA